

GlobalLogic

A Hitachi Group Company

Accelerated financial data classification with **GenAI automation**

This global leader in audit and accounting software solutions, needed an intelligent solution to automate financial report column mapping and account classification, reducing manual effort and improving accuracy. GlobalLogic delivered a GenAI-powered proof-of-concept (PoC) for:

50%

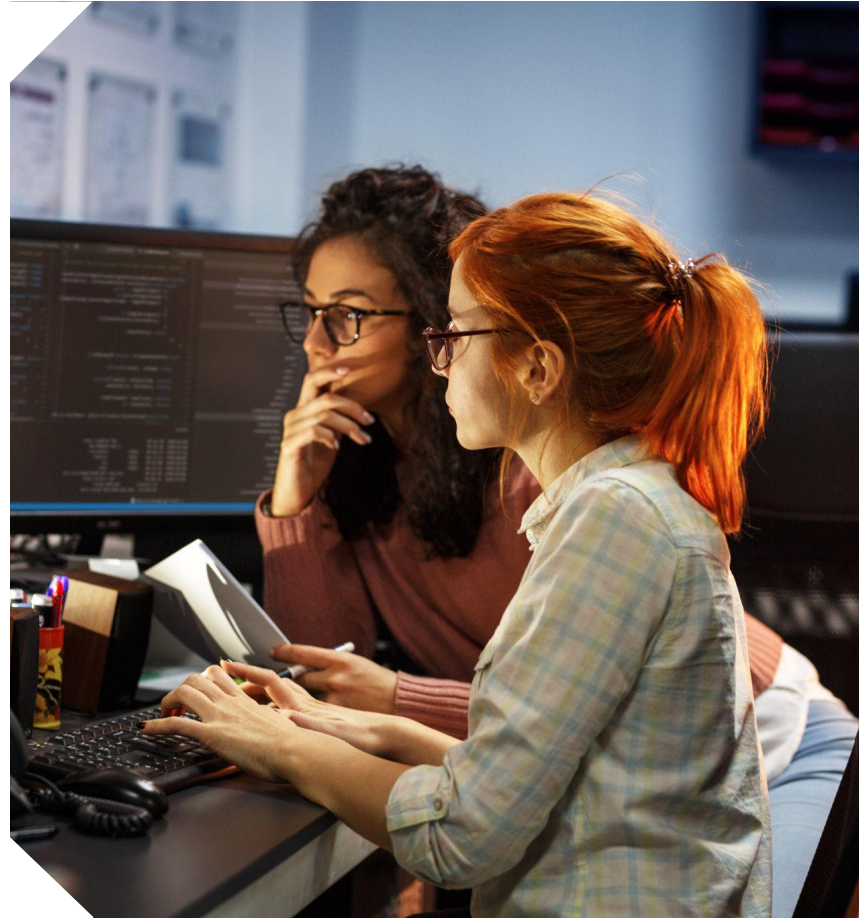
improved column mapping accuracy

80%

reduced turnaround time

90%

minimum accuracy in expense account mapping



Opportunity

Our client provides accounting and auditing solutions that require manual classification of financial report data, including assigning financial report columns to headers and categorizing assets, equity, liabilities, income, and expenses to the appropriate Chart of Accounts.

The **extensive volume, unpredictability,** and **complexity of financial data** made this process labor-intensive and prone to errors.

This firm sought an AI-driven approach to automate classification, minimize misinterpretations, and improve processing efficiency.

GlobalLogic

A Hitachi Group Company

Value Delivered

- Automated financial report column mapping and account classification.
- Implemented standardized headers and an intelligent account mapping structure.
- Integrated a feedback loop to enhance classification accuracy over time.

Impact

- Reduced manual troubleshooting, **minimizing errors** and misclassifications.
- **Improved efficiency** with a 70-80% increase in employee throughput.
- Achieved **90%+ accuracy** in expense account mapping.
- Enhanced **GenAI-powered suggestions** for grouping trial balances and expenditures.